

CFORCE

用户手册

USER MANUAL

注意：请在使用产品前仔细阅读用户手册，并在使用后妥善保存。
Note: Please read the user manual carefully before using the product and keep it properly after use.

显示器是易碎物品。请在使用前检查包装和产品是否有任何损坏。
如果您发现任何问题，请立即与我们联系以获得技术支持或售后解决方案。

操作&使用视频

想要快速学习如何使用这个显示器？
扫描二维码观看视频教程。



亲爱的用户，感谢您选择CFORCE。
我们承诺为您提供愉快的购物体验：

如果您购买后遇到任何问题，

请联系我们的在线客服，

我们会尽全力帮助您。

CFORCE 提供：12个月保修
增强版在线实时响应客户服务

Monitors are fragile items. Please check the package and product for any damage before use. If you find any problems, please contact us immediately for technical support or after-sales solutions.

Operation&Use Video

Want to quickly learn how to use the display?

Scan the QR code to watch the video tutorial.



Dear user, thank you for choosing CFORCE.
We promise a pleasant shopping experience:

If you have any issues after purchase,

please contact our online customer service,

We'll do our best to help.

Please Contact

[ wesley@cforcedesign.com]

CFORCE Provides: 12-Month Warranty
Enhanced with online real-time responsive customer service

安全指导

请在使用设备前仔细阅读产品包装中的用户手册。

为避免损坏机器内部的安全组件，请在安装、使用和维修设备时遵循以下规则：

为避免火灾或电击风险，请将本产品远离雨水或湿气。

在使用此设备之前，请确保所有连接都已正确连接，并且电源线没有损坏；如有任何损坏，请立即联系经销商。

避免灰尘、过多的湿气以及极端温度。不要将设备放置在任何可能暴露于水或潮湿的环境中。使用时请将设备放置在平滑的表面上。

切勿向设备外壳上的开口处插入任何异物或让任何液体溅入。

注意：请使用支持PD充电协议的USB-C电源适配器。如果使用非原装电源适配器，则必须满足电源适配器的CCC认证，

并需要符合整个设备的电气规格。（电气参数如下：9VDC 3.0A，12VDC 2.5A，15VDC 2.0A，20VDC 1.5A）。

请勿尝试打开机器的后盖。内部没有用户可自行维修的零件。如有任何异常，请联系我们。

为避免人身伤害，请遵守以下规则：

除非采取了安全措施，否则请勿将显示器放在倾斜的桌面上；

请勿向屏幕投掷或掉落物品或玩具，这可能会导致人身伤害、产品损坏和屏幕损坏；

Warning

Please read the user manual in the product packaging carefully before using the device.

To avoid damaging the safety components inside the machine, please follow the following rules during installation, usage, and repair of the equipment:

1. To prevent the risk of fire or electric shock, keep this product away from rain or moisture.
2. Before using this equipment, make sure that all connections are properly connected and that the power cord is not damaged; if there is any damage, contact the dealer immediately.
3. Avoid dust, excessive moisture, and extreme temperatures. Do not place the equipment in any area where it can be exposed to water or dampness. Place the equipment on a smooth surface when in use.
4. Do not insert any foreign objects or allow any liquids to spill into the openings in the housing of this equipment.
5. Note: Use a USB-C power adapter that supports the PD charging protocol. If you use a non-original power adapter, it must meet the CCC certification of the power adapter and needs to meet the electrical specifications of the entire device. (Electrical parameters are as follows: 5VDC 3.0A, 9VDC 3.0A, 12VDC 2.5A, 15VDC 2.0A, 20VDC 1.5A).
6. Do not attempt to open the rear casing of the machine. There are no user-serviceable parts inside. Please contact us if there are any abnormalities.

To avoid personal injury, please observe the following rules:

1. Don't place the monitor on a sloping table unless safety measures are in place;
2. Don't drop or throw objects or toys onto the screen, which may result in personal injury, product damage and damage to the screen;

安全指导

为防止其他伤害，请遵守以下规则：

1. 当您长时间离开时，请关闭显示器；
2. 不允许儿童向显示器内投掷或插入物品；
3. 不要安装不是专门为该设备设计的零部件；
4. 当设备长时间无人看管时，请拔下电源线；
5. 当打雷时，请勿触摸电源线或信号线，可能会引起电击；
6. 不要让任何物体压迫或包裹电源线；
7. 不要将显示器放置在容易损坏电源线的位置。

为防止机器损坏，应避免以下情况：

1. 避免将显示器放置在容易掉落的位置。
2. 不要将显示器放在散热器或热源附近，以防设备过热和损坏。
3. 电源线应放置在不易触及的地方，以避免绊倒危险并确保安全。

不要用硬物擦拭屏幕，因为这可能会划伤或永久损坏屏幕。

不要长时间用手指按压屏幕，因为这可能会留下指纹并甚至损坏屏幕。

屏幕上可能会出现红色、绿色和蓝色的像素缺陷，但这不会影响显示器的功能。

为获得最佳效果，请使用推荐的分辨率。如果使用不同的分辨率，屏幕可能会出现异常。但是，这是固定分辨率LCD/OLED面板的一个特性。

长时间在屏幕上显示静止图像可能会损坏屏幕并导致残影。请确保使用屏幕保护程序。残影和相关问题不在保修范围内。

如果您在使用此设备时遇到任何技术问题，请联系技术支持或联系我们。

Warning

To prevent other injuries, please observe the following rules:

1. When you leave for a long time, please turn off the monitor;
2. Do not allow children to throw or insert items into the monitor;
3. Do not install spare parts that are not specifically designed for this equipment;
4. Unplug the power cord when the device is left unattended for a long time;
5. When lightning strikes, do not touch the power cord or signal cable, it may cause electric shock;
6. Do not let any object compress or wrap the power cord;
7. Do not place the monitor where it can easily damage the power cord.

To prevent damage to the machine, the following should be avoided:

1. Avoid placing the monitor in a position where it can easily fall.
2. Do not place the monitor near a radiator or heat source to prevent overheating and damage to the equipment.
3. The power cord should be placed in an area that is not easily accessible to avoid trip hazards and ensure safety.

Do not rub the screen with hard objects, as it may scratch or permanently damage it.

Do not press the screen with your fingers for extended periods, as it may cause smears and even damage the screen.

Red, Green, and Blue pixel defects may appear on the screen, but they do not affect the monitor's functionality.

For best results, use the recommended resolution. If you use a different resolution, screen abnormalities may occur. However, this is a characteristic of fixed-resolution LCD/OLED panels.

Displaying a still image on the screen for a long time can damage the screen and cause afterimages. Please ensure to use a screen saver. Afterimages and related issues are not covered by the warranty.

If you encounter any technical problems while using this device, please contact technical support or contact us.

与设备连接 Connect With Devices

1. 连接外部电源 Connect to an External Power Source

请先将电源连接到屏幕上，并确保屏幕有亮屏状态。

Please connect the power supply to the screen first and make sure the screen is turned on.

2. 连接设备 Connect devices

然后连接[全功能USB-C线缆]或[HD视频线缆]以输出视频信号。

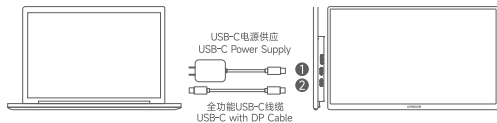
Then connect the [USB-C with DP Cable] or [HD Video Cable] to output the video signal.

连接方法 Connection Method



1. 笔记本/电脑 USB-C/Type-C/雷电/USB4 (支持音视频传输)端口

Laptop/Computer USB-C/Type-C/Thunderbolt/USB4 Port (Supporting Audio and Video Transmission)



*建议在固定使用场景下, 搭配电源(支持反向供电)

*如无法投屏: 请检查USB-C端口是否支持音视频传输, 或连接高清端口投屏(需先给屏幕供电)。

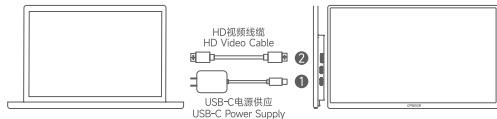
*Fixed use? Pair with reverse-charging power supply.

*If projection fails, check USB-C for A/V or use HD Video (power screen first).



2. 笔记本/电脑 HD视频端口

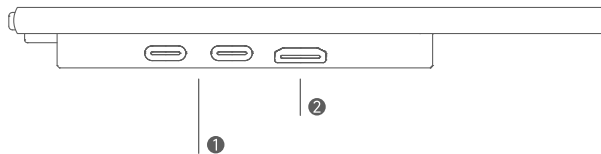
Laptop/Computer HD Video Port



*若设备仅有HD视频端口, 或USB-C端口不支持音视频传输, 可先给屏幕供电后, 使用HD视频线缆连接投屏。

*If the device lacks USB-C support for A/V, power the screen and connect via HD video cable for projection.

功能键&端口 Function Keys&Ports



1. 全功能USB-C端口×2 (用于音频、视频和供电)

该设备支持在两个USB-C端口之间无缝切换，无论USB-C连接的方向如何。两个端口都能够传输音频、视频和触摸信号。此外，它还支持反向充电，并与PD电源供应协议兼容，支持在9V、12V、15V和20V下进行充电。然而，重要的是要注意，这两个端口不能同时用于充电或数据传输。

1. USB-C 3.1 with DP Port×2 (for Audio, Video, and Power)

This device supports seamless switching between two USB-C ports, regardless of the direction of the USB-C connection. Both ports are capable of transmitting audio, video, and touch signals. Additionally, it supports reverse charging and is compatible with the PD 2.0 power supply protocol, enabling charging at 5V, 9V, 12V, 15V, and 20V. However, it's important to note that the two ports cannot be used simultaneously for charging or data transfer.

注意：必须使用支持PD充电协议的USB-C电源适配器。如果您使用非原装电源适配器，则必须满足电源适配器的CCC认证要求，并需要符合整机的电气规格。

(电气参数如下：9VDC 3.0A, 12VDC 2.5A, 15VDC 2.0A, 20VDC 1.5A)。

Note: USB C power adapter that supports PD charging protocol must be used. If you use a non-original power adapter, it must meet the CCC certification of the power adapter and needs to meet the electrical specifications of the whole machine.

(Electrical parameters are as follows: 5VDC 3.0A, 9VDC 3.0A, 12VDC 2.5A, 15VDC 2.0A, 20VDC 1.5A).

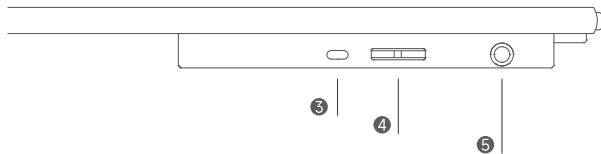
2. Mini HD视频接口 (需要电源供电才能工作)

音频和视频信号传输。它可以与笔记本电脑、台式电脑、机顶盒、DVD播放器、电视、游戏机、数字音频设备和电视机等设备一起使用。

2. Mini HD Video Interface (It requires a power supply for operation.)

Audio and Video signal transmission. It can be used with laptops, desktop computers, set-top boxes, DVD players, personal computers, TVs, game consoles, AV receivers, digital audio devices, and television sets, among other devices.

功能键&端口 Function Keys&Ports



3. 信号源 / 返回 / 休眠

当没有OSD主菜单时，它用于快速切换信号源；

当调用OSD菜单时，它用于返回和退出；屏幕休眠（长按3秒关闭屏幕，短按开启）。

3. Signal Source / Return / Sleep Mode

When there is no OSD main menu, it is used for quickly switching signal sources;

When the OSD menu is called, it is used for returning and exiting; Screen sleep mode (long press for 3 seconds to turn off the screen, short press to turn on).

4. OSD菜单 / 确认

可通过屏幕上的菜单选项来调整和设置显示器的各项参数和功能。

4. OSD Menu / Confirm

You can adjust and set various parameters and functions of the display through the menu options on the screen.

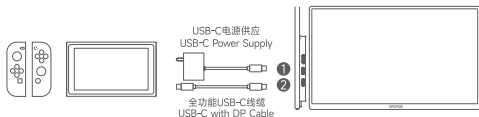
5. 3.5mm 耳机端口 耳机/音响扩展接口

5. 3.5mm Headphone Jack Headphone/speaker expansion interface

连接方法 Connection Method



3.任天堂Switch游戏掌机 Nintendo Switch



*连接前请先拆下Switch Joy-Con手柄;

*先给屏幕供电后, 使用全功能USB-C线缆连接投屏。

*Switch仅支持1080P/60Hz的视频信号输出。

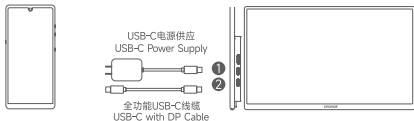
*Detach Joy-Cons before connecting.

*Power screen, then connect with USB-C with DP for mirroring.

*The Switch only supports 1080P/60Hz video signal output.



4.手机 USB-C/Type-C/雷电/USB4 (支持音视频传输)端口 Mobile Phone USB-C/Type-C/Thunderbolt/USB4 Port (Supporting Audio and Video Transmission)



*先给屏幕供电后, 使用全功能USB-C线缆连接投屏。

*如无法投屏, 请检查USB-C端口是否支持音视频传输。

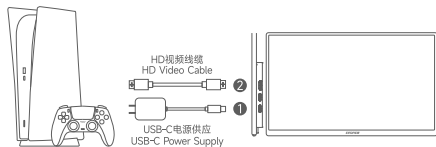
*Power screen, connect USB-C cable for mirroring.

*If no mirroring, check USB-C for A/V support.

连接方法 Connection Method



5. PS4/PS5/Xbox游戏主机 HD视频端口 PS4/PS5/Xbox HD video port

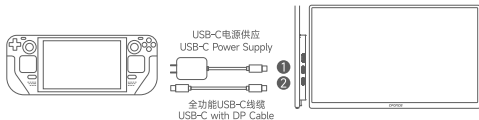


*先给屏幕供电后, 使用HD视频线缆连接投屏。

*After powering the screen, connect using an HD video cable for screen mirroring.



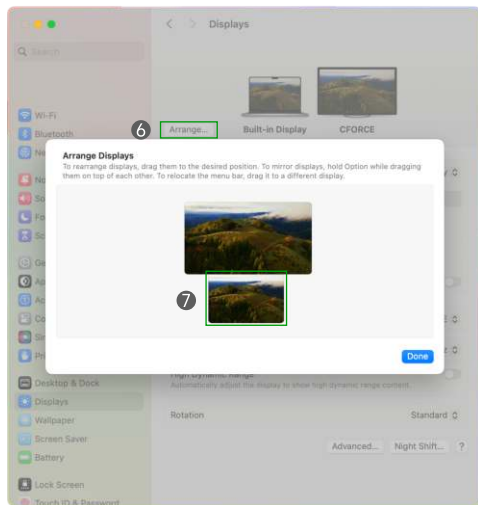
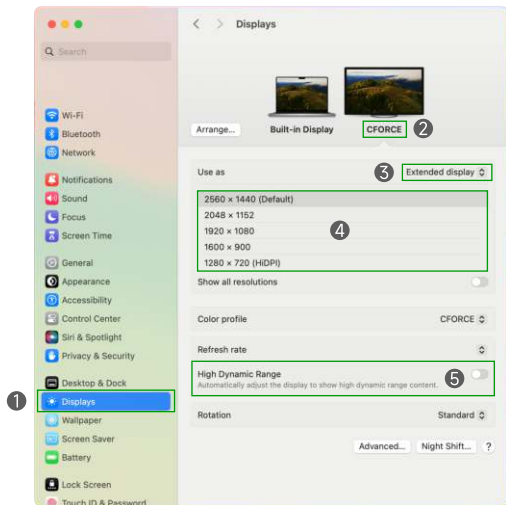
6. Steam Deck游戏掌机 Steam Deck



*先给屏幕供电后, 使用全功能USB-C线缆连接投屏。

*After powering the screen, connect using a USB-C with DP Cable for screen mirroring.

在Mac上设置显示偏好 (完成设置后, 请记得点击保存)



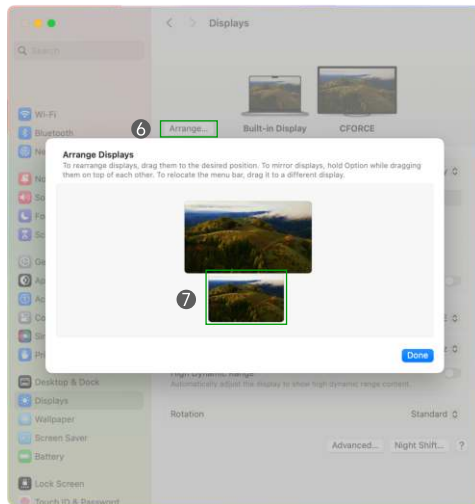
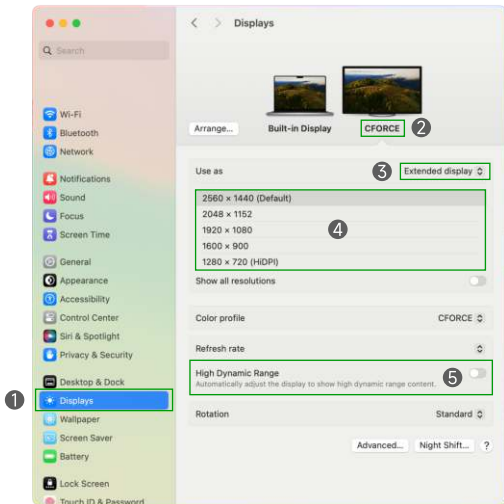
步骤 1 → 2 → 3: 设置便携式显示器的 **扩展显示** 或 **镜像显示**

步骤 1 → 2 → 4: 设置便携式显示器的 **分辨率**

步骤 1 → 2 → 5: 设置便携式显示器的 **HDR**

步骤 1 → 2 → 6 → 7: 设置便携式显示器的 **排列位置** (你可以将显示器移动到所需的位置)

Display Preferences on Mac (After completing the settings, please remember to click Save)



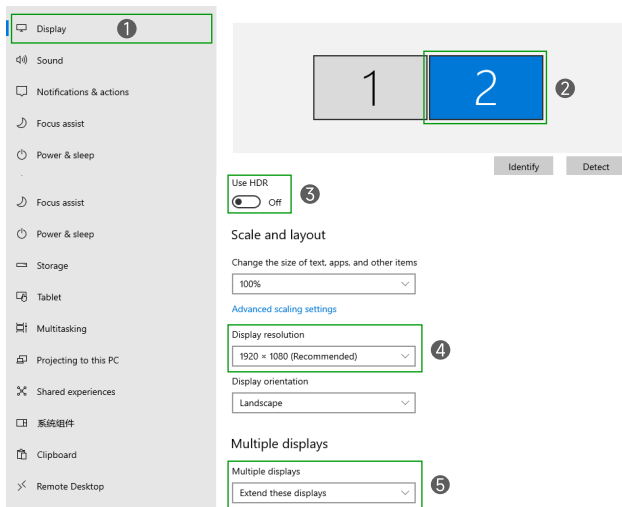
Step 1 → 2 → 3: Set the Portable Monitor **Extended display** or **Mirrored display**

Step 1 → 2 → 4: Set the **Resolution** for the Portable Monitor

Step 1 → 2 → 5: Set up **HDR** for the Portable Monitor

Step 1 → 2 → 6 → 7: Set the **Arrange** for the Portable Monitor (You can move the display to the desired position.)

在Win10/11上设置显示偏好 (完成设置后, 请记得点击保存)



步骤 1 → 2 → 5: 设置便携式显示器的 **扩展显示** 或 **镜像显示**

步骤 1 → 2 → 4: 设置便携式显示器的 **分辨率**

步骤 1 → 2 → 3: 设置便携式显示器的 **HDR**

步骤 1 → 2: 设置便携式显示器的 **排列位置** (你可以将显示器移动到所需的位置)

Display Preferences on Win10/11

(After completing the settings, please remember to click Save)

The screenshot shows the Windows Settings application with the 'Display' section selected. The left sidebar contains various system settings, with 'Display' highlighted and marked with a circled '1'. The main content area shows the 'Display' settings for a monitor. A diagram at the top shows two monitors: a grey one labeled '1' and a blue one labeled '2', with a circled '2' next to the blue monitor. Below the diagram are 'Identify' and 'Detect' buttons. The 'Use HDR' toggle is turned off and marked with a circled '3'. The 'Scale and layout' section shows '100%' for scaling. The 'Display resolution' dropdown is set to '1920 x 1080 (Recommended)' and marked with a circled '4'. The 'Display orientation' is set to 'Landscape'. The 'Multiple displays' dropdown is set to 'Extend these displays' and marked with a circled '5'.

Step 1 → 2 → 5: Set the Portable Monitor **Extended display** or **Mirrored display**

Step 1 → 2 → 4: Set the **Resolution** for the Portable Monitor

Step 1 → 2 → 3: Set up **HDR** for the Portable Monitor

Step 1 → 2: Set the **Arrange** for the Portable Monitor (You can move the display to the desired position.)

常见问题 与 解决方案

Q: iPhone和iPad可以直接连接到显示器上吗?

A: 目前, 仅支持iPhone 15 Pro以上, 以及2018年后发布的iPad Pro型号。

Q: 需要哪种电源适配器?

A: 1080P机型建议选PD协议20W以上电源, 2.5K或4K机型建议选PD协议30W以上电源。
普通5V2A电源可能供电不足。有疑问请咨询在线客服。

Q: 屏幕通电后亮了, 但显示无信号?

A: ① 使用高质量的视频, 尝试更换新的视频线, 检查线材的接口是否干净;
② 访问显卡制造商的官方网站, 检查是否有可用的驱动更新;
③ 查询主设备接口是否支持扩展显示器, 确保相互兼容, 并且不选择转接的方式。

Q: 屏幕闪烁并持续开关。如何解决?

A: 这种现象是由于供电不足造成的, 请连接外部电源以解决这个问题。
电源的功率输出需要达到至少PD15W或PD30W以上;

Q: 当屏幕显示红色/绿色/蓝色界面时, 我应该怎么做?

A: 当屏幕处于出厂模式(红/绿/蓝交替闪烁)时, 请长按第四个按钮3秒至屏幕关闭, 再短按开启。之后重新拔插电源。

Q: 为什么HDR开启后泛白?

A: HDR功能需显示器和设备(如Mac、Windows)同时开启。如遇画面泛白, 可能是一侧未成功开启HDR。请检查并确保两侧均已开启。

Q: 为什么我玩游戏掉帧?

A: 屏幕仅用于输出显示作用, 游戏掉帧请检查配置要求, 游戏机(如Xbox、PlayStation、Switch)运行大型游戏时可能掉帧, 如Switch的《动森》后期或《艾尔登法环》。

Q: 没有HDMI和USB-C接口怎么连接?

A: 设备仅含DP接口时, 可选购DP转HDMI转接线, 具体咨询请联系在线客服。

FAQ and Solution

Q: Can iPhones and iPads connect directly to monitors?

A: iPhone 15 Pro+ & iPad Pro (2018+), currently supported for direct display connection.

Q: What kind of power adapter is required?

A: 1080P: PD 20W+, 2.5K/4K: PD 30W+, 5V2A may be insufficient. Consult online support.

Q: The screen is powered on and lit, but it shows "No Signal"?

A: ① Try new, clean high-quality cable.
② Check for graphics driver updates.
③ Ensure direct compatibility, avoid adapters.

Q: The screen flickers and keeps turning on and off. How can I fix it?

A: Insufficient power causes flickering. Connect PD15W/30W+ external power source.

Q: What should I do when the screen displays a red/green/blue interface?

A: In factory mode, hold 4th button 3s to off, tap to on, then reconnect power.

Q: Why does the screen appear washed out when HDR is enabled?

A: HDR needs display & device (Mac, Windows) both enabled. Check if both support HDR if screen is washed out.

Q: Why is my game experiencing frame drops?

A: Check config for frame drops. Large games on consoles (Xbox, PS, Switch) may cause drops.

Q: How can I connect if there are no HDMI or USB-C ports available?

A: If the device only has a DP port, you can purchase a DP to HDMI adapter. For specific inquiries, please contact online customer service.

维护&清洁

Q: 如何清洁我的屏幕？

- A: ① 关闭显示器并拔掉电源线。使用中性洗涤剂清洁显示器表面的布。在湿润后擦拭顽固污渍；
② 不要使用含有酒精或丙酮的洗涤剂，使用LCD清洁剂时，不要将清洁剂直接喷在屏幕上，否则清洁剂可能会渗入显示器并引起电击。

Q: 以下现象对于显示器来说是正常的

- A: ① 您可能会发现屏幕上的亮度略有不均匀。这可能与所使用的桌面图案有关；
② 在显示同一图像数小时后，切换图像时可能会看到之前的屏幕残留，但屏幕会慢慢恢复。或者，您可以关闭电源数小时；
③ 当屏幕变黑或闪烁，或您无法继续工作时，请联系您的经销商或服务中心进行维修，不要尝试自行修理屏幕。

Q: 关于退换货的包装问题

A: 不要扔掉用过的包装，在物流过程中如有损坏或丢失，请按照原始包装方式重新包装显示器。

Q: 废弃处理

- A: ① 不要将产品作为一般家庭垃圾处理；
② 产品处理必须遵守当地法规。

Maintenance&Cleaning

Q: How to Clean My Screen?

- A: ① Turn off the monitor and unplug the power cord. A cloth that cleans the surface of the display and is clothed in a neutral detergent. Wipe stubborn stains after wet;
- ② Do not use detergents containing alcohol or acetone. Use LCD with detergent, do not spray the cleaner directly on the screen, otherwise the cleaner may seep into the display and cause an electric shock.

Q: The following phenomena are normal for the display

- A: ① You may find that the brightness on the screen is slightly uneven. This may be related to the desktop pattern that is used.
- ② After the same image is displayed for several hours, the previous screen may remain visible when switching images, but the screen will recover slowly. Alternatively, you can turn off the power supply for several hours.
- ③ When the screen goes black or flickers, or you cannot continue working, please contact your dealer or service center for repairs. Do not attempt to repair the screen yourself.

Q: Regarding Packaging Matters for Returns and Exchanges

- A: Do not throw away used packaging. In case of damage or loss during logistics, repackaging the monitor as it was originally packed.

Q: Disposal

- A: ① Do not dispose of the product as general household waste.
- ② Product handling must comply with local regulations.

售后服务

本产品提供原厂一年保修服务

- ① 自销售日期起 7天内，如果产品出现《产品性能故障表》中所列缺陷，消费者可选择退货、换货或修理；
- ② 自销售日期起 15天内，如果产品出现《产品性能故障表》中所列缺陷，消费者可选择换货或修理；
- ③ 自销售日期起 一年内，如果产品出现《产品性能故障表》中所列缺陷，消费者可选择修理。

以下情况不在三包范围内

- ① 保修已过期；
- ② 没有有效的保修证明；
- ③ 屏幕有3个或以下的坏点、3个或以下的亮点、5个或以下的坏点亮点总数；
- ④ 没有按照用户手册使用、保养或维护。造成损坏的（人为损坏）非CFORCE授权的修理人员拆动造成损坏的（私自拆修）；
- ⑤ 不在中国大陆（不包括香港、澳门、台湾）销售的商品。

**“为了使您的合法权益受到保护，避免不必要的损失，对于下列原因导致显示器故障或损坏
我司不承担免费保修义务，请您选择有偿服务。”**

- ① 保修期已过；
- ② 当液晶面板被划伤、碰撞、变形或凹陷时；
- ③ 未经授权的维修人员进行的拆卸或修理；
- ④ 由意外因素或人为行为及外力（包括操作）造成的损坏，如错误操作、处理不当、碰撞、输入不适当的电压等；
- ⑤ 使用非标准或未发布的软件或非标准方式关闭计算机组件（如：显卡等）；
- ⑥ 由自然灾害等不可抗力因素（如地震、火灾、洪水等）造成的损坏。

After Sales Service

This product provides original One year warranty service.

- ① Within 7 days from the date of sale, the micro-computer vendor consumers can choose to return the goods if defects listed in the Product Performance Fault Table happen, to ask for exchange or repair;
- ② Within 15 days from the date of sale, the micro-computer vendor Consumers can choose to exchange goods when the defects listed in the product Performance fault table happened or ask for repair;
- ③ Within One year from the date of sale, the micro-computer vendor Consumers can choose to repair, when the defects listed in the Product Performance Fault Table happened.

The following conditions are not within the scope of the Three Guarantees

- ① Warranty Expired;
- ② There is no valid warranty proof;
- ③ The screen has 3 or less dead pixels, 3 or below highlights, 5 or The total number of bad lighting points below;
- ④ It is not used, maintained or maintained according to the product manual.Damaged (man-made damage) by unauthorized repairer or private repair;
- ⑤ Not sold in mainland China (excluding Hong Kong, Macao, Taiwan)Goods for sale.

"In order to protect your legal rights and interests and avoid unnecessary loss caused by display failure or damage due to the following reasons, our company does not assume the free warranty obligation. Please opt for the paid service instead."

- ① Expired warranty period;
- ② When the LCD panel is scratched, bumped, deformed, or recessed;
- ③ Demolition or repair by an unauthorized service person;
- ④ Damage caused by accidental factors or human behavior and external forces (including operations) Mistakes, handling, bumping,input of inappropriate voltage, etc.);
- ⑤ Use non-standard or unpublished software or non-standard phase Turn off computer components (such as: display cards, etc.);
- ⑥ Damage caused by force majeure such as natural disasters (eg earthquake, fire, floods, etc.);

我们衷心希望CFORCE能为您的生活带来欢乐和便利
We sincerely hope CFORCE can bring you joy and convenience.